

PRE-BID CLARIFICATION FORM

PROJECT NAME:		FILLMORE HIGH SCHOOL NEW ATHLETIC COMPLEX	
PROJECT NUMBER:		Project No. 2024-017 / DSA #03-123950	
TO:		RJ Stump EMAIL: rj.stump@fillmoreusd.org Fillmore Unified School Dist. Roy Frey WestGroup Designs royf@westgroupdesigns.com	
DATE:	January 29, 2025		
FROM:	Icon West, Inc. 520 S. La Fayette Park Pl, Suite 503 Los Angeles, CA 90057	EMAIL:	felix@icon-west.com
DOCUMENT/DIVISION NUMBER:	Spec 03-123950_SPC_A - Base Bid	DRAWING NUMBER:	

REQUESTED CLARIFICATION: #14

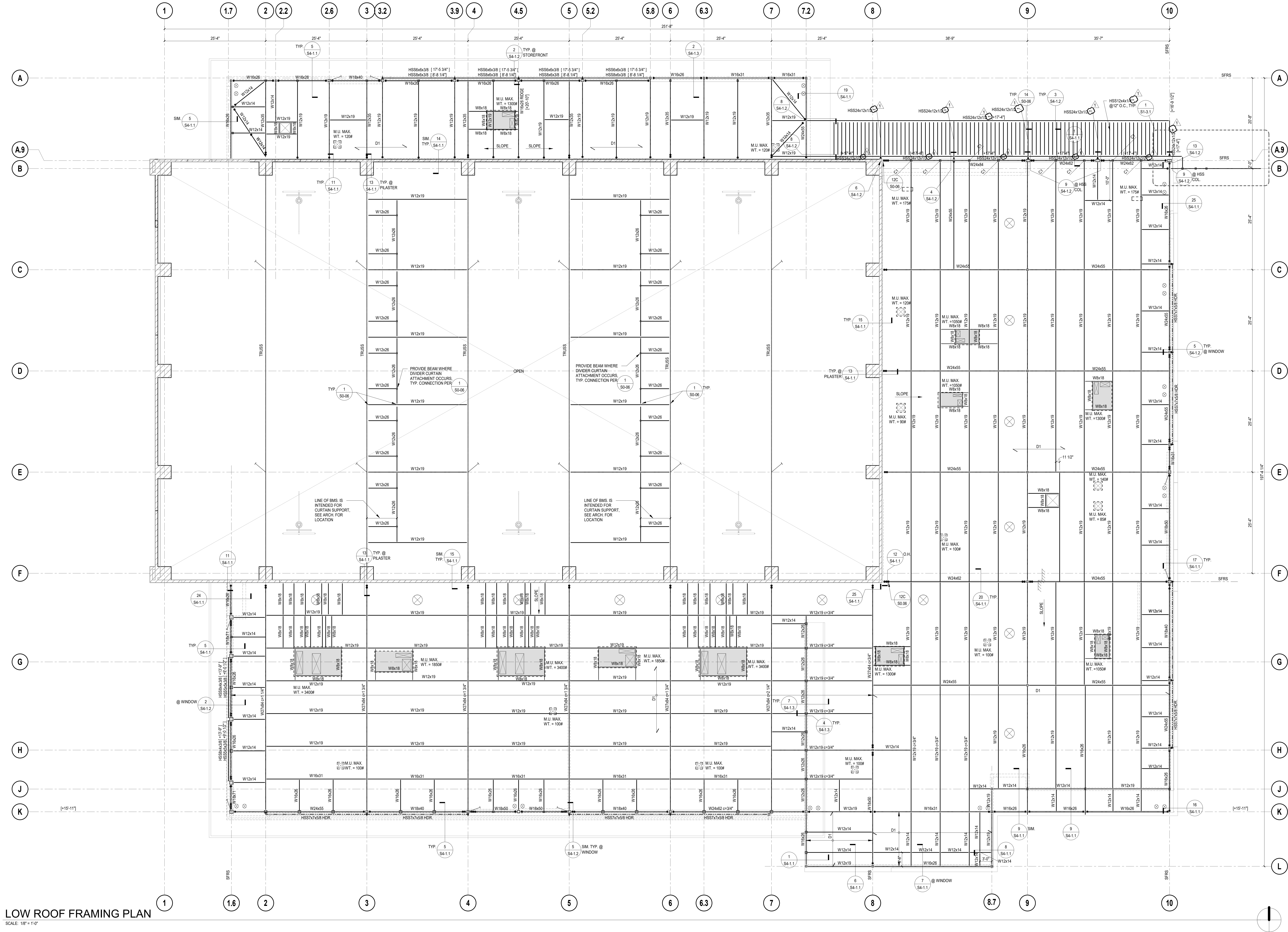
Sheet 89 of 788, 05 12 13 Architecturally Exposed Structural Steel. Please note that per the AISC, it is required that steel designated as AESS must be clearly marked on the plans (A and/or S drawings). We do not see any callouts for exposed structural steel or "AESS" on the architectural drawings nor the structural drawings. Please clearly identify what steel should be treated as AESS for level bidding purposes across all contractors bidding on this opportunity. Furthermore, please identify the AESS designation as required.

AESS marked on structural plans. Level to be AESS 3. See revised drawings.

Roy Frey - Westgroup Designs - 01/29/2025



SCALE: 1/8" = 1'-0"



LOW ROOF FRAMING PLAN

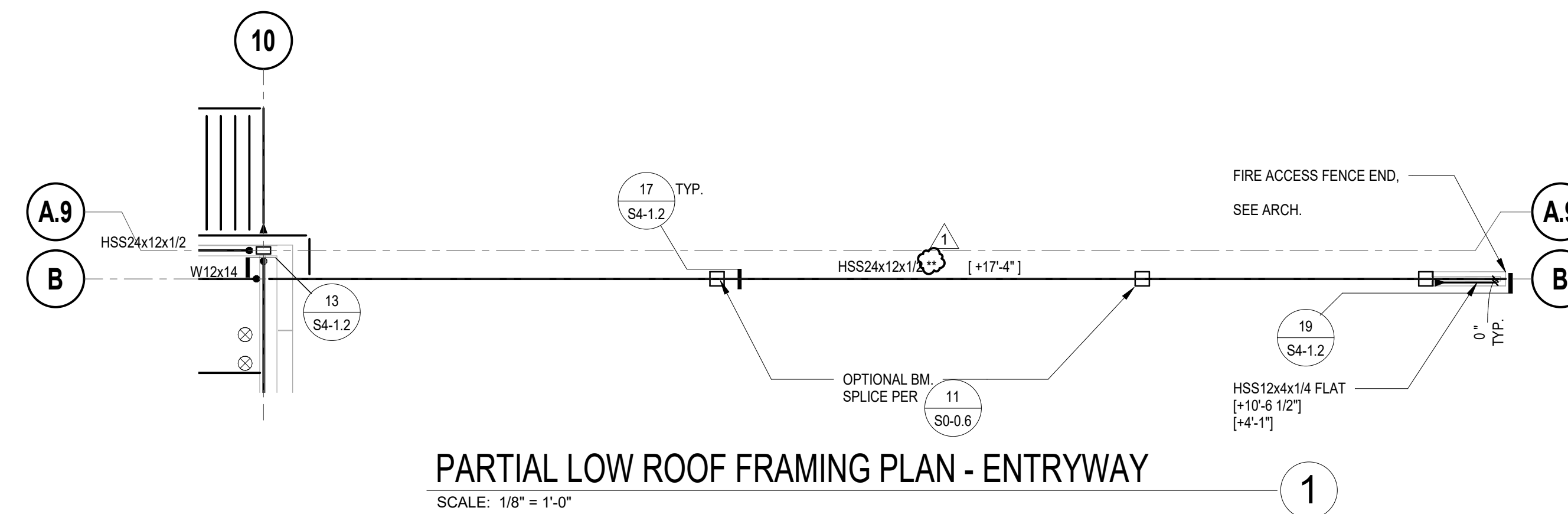
SCALE: 1/8" = 1'-0"

ROOF FRAMING PLAN NOTES

- SEE SHEETS S0-01 THROUGH S0-09 FOR GENERAL NOTES AND TYPICAL DETAILS.
- FOR ANY DIMENSIONAL INFORMATION NOT SHOWN, SEE ARCHITECTURAL DRAWINGS.
- SEE ARCHITECTURAL, PLUMBING, MECHANICAL AND ELECTRICAL DRAWINGS FOR SIZE AND LOCATION OF ROOF OPENINGS NOT SHOWN ON ROOF FRAMING PLANS. SEE DETAILS 4/50-07 FOR TYPICAL OPENINGS, UNLESS NOTED OTHERWISE.
- ALL BEAMS SHALL BE EQUALLY SPACED BETWEEN COLUMNS, UNLESS NOTED OTHERWISE.
- "M.U." DENOTES MECHANICAL UNIT. MAXIMUM ALLOWABLE WEIGHT IS SHOWN, SEE MECHANICAL AND ARCHITECTURAL DRAWINGS FOR EXACT SIZE AND WEIGHT OF MECHANICAL UNITS FOR TYPICAL FRAMING AT MECHANICAL UNITS. SEE DETAIL 1/50-07.
- THE CONTRACTOR SHALL COORDINATE LOCATION OF ALL FRAMING BEAMS AT MECHANICAL UNITS WITH MECHANICAL DRAWINGS. THE LOCATION OF FRAMING SHALL MATCH CURB LAYOUT AND ROOF PENETRATIONS FOR THE SUPPLIED UNITS.

LEGEND

- INDICATES TOP OF STEEL ELEVATION.
- INDICATES SPAN OF METAL DECK. DECK SPAN SHALL SPAN OVER 2 SPANS MINIMUM (3 SUPPORTS) AND 3 SPANS (4 SUPPORTS) WHEREVER POSSIBLE. SEE ROOF CONSTRUCTION SCHEDULE ON SHEET 1/50-07 FOR STRUCTURAL DECK AND FILL REQUIREMENTS.
- INDICATES AMOUNT OF CHAMFER IN STEEL BEAM. NO CHAMFER REQUIRED WHERE NONE SHOWN.
- INDICATES TYPICAL CONNECTION WITH ASTM A325SC BOLTS.
- INDICATES WELDED DRAG CONNECTION PER DETAIL 1/250-06.
- INDICATES EXTENDED WELDED DRAG CONNECTION PER DETAIL 1/250-06.
- INDICATES WELDED MOMENT CONNECTION.
- INDICATES A BRACED FRAME BEAM TO COLUMN CONNECTION. SEE BRACED FRAME ELEVATIONS FOR ADDITIONAL INFO.
- INDICATES 2" OF LIGHTWEIGHT CONCRETE (110 PCF) FILL UNDER MECH. UNIT.
- INDICATES PARAPET SUPPORT HSS COLUMN ABOVE PER 2/54-1.1.
- INDICATES A LINE OF FRAMING THAT IS PART OF THE SEISMIC FORCE RESISTING SYSTEM. ALL WELDING SHALL CONFORM TO AWS D1.1 & D1.8.
- INDICATES TOP OF STEEL ELEVATION.
- INDICATES KICKER BRACE PER DETAIL 1/50-1.1.
- INDICATES ARCHITECTURAL EXPOSED STRUCTURAL STEEL (AESS) - CATEGORY 3.



PARTIAL LOW ROOF FRAMING PLAN - ENTRYWAY

SCALE: 1/8" = 1'-0"



19900 MacArthur Boulevard | Suite 1000
Irvine | California | 92612
949.250.0880 | FAX 949.250.0882
www.westgroupdesigns.com



engineering consultants
1 Ada, Suite 100 | Irvine, CA 92618
Tel (949) 452-3000 | Fax (949) 452-3001
www.rtmec.com



rtm Job No.: 23 WGD001.113 (252.020)

FILLMORE HIGH SCHOOL ATHLETIC COMPLEX
FILLMORE UNIFIED SCHOOL DISTRICT
555 Central Ave. Fillmore, CA 93015

ISSUED FOR:

REVISIONS:
2. Addendum 2

REGISTRATION/SIGNATURE:

SHEET TITLE:
LOW ROOF FRAMING PLAN

SHEET NUMBER:
S1-3.1

WD PROJ. # 22851 | DRAWN BY Author | CHECKED Checker | DATE 11/14/2024

© WESTGROUP DESIGNS, INC.

DSA RESUBMITTAL - 06/20/2024